

---

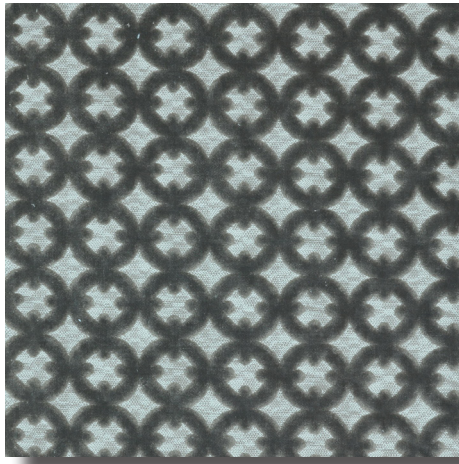
# Burg-10

---

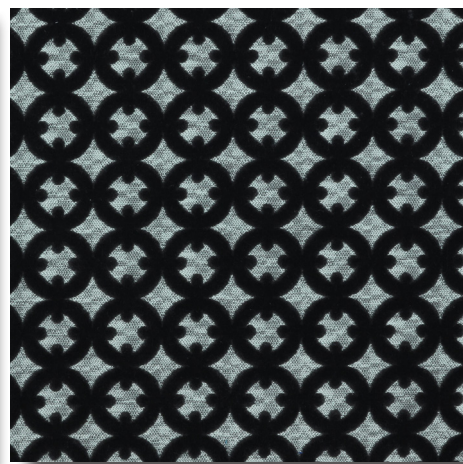
Jacquard Velvet



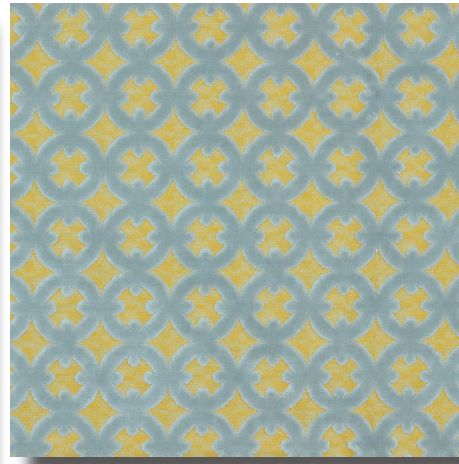
**Taka fabrics**



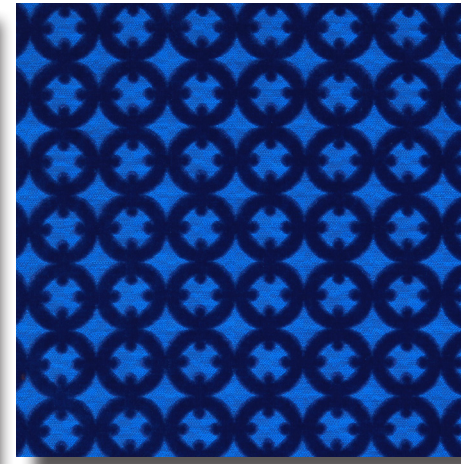
BURG 2275



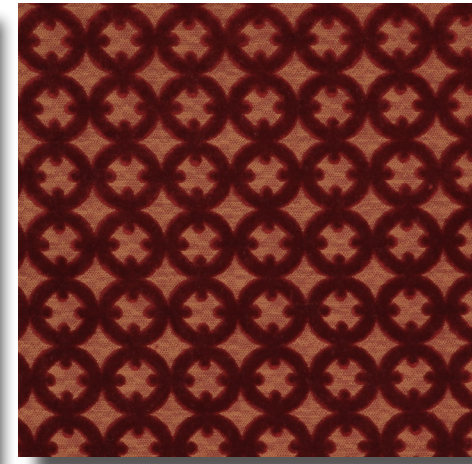
BURG 7118-1



BURG 1725-1



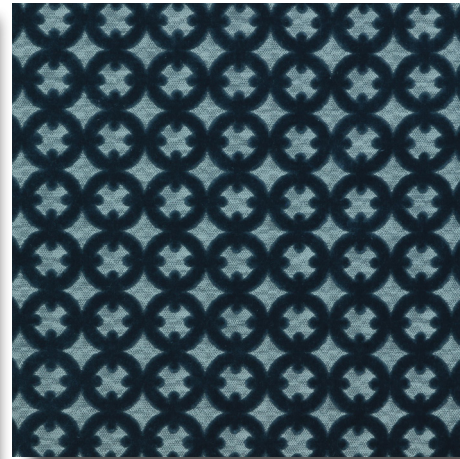
BURG 6352-2



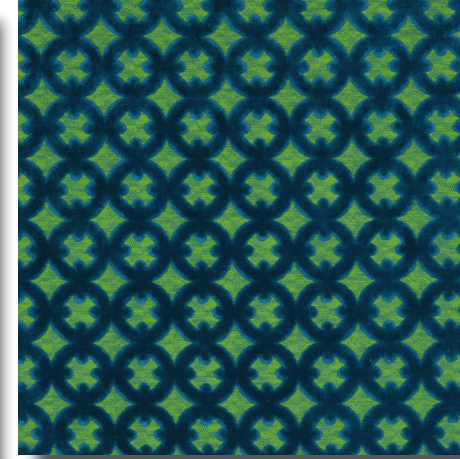
BURG 4010-1



BURG 4011-2



BURG 2461



BURG 5169-1

**Composition / Kompozisyon**

%25 COT, %75 PES - %100 PES Pile

**Width / Kumas Eni**

142 cm

**Weight / Kumas Gramajı**

870 gr/lm

**Design Rapport / Desen Raporu**

Horizontal: 4 cm, Vertical: 4 cm

**Abrasion Resistance (Martindale)**

> 50000 rubs

**Resistance to Pilling / Boncuklanma**

Grade 4 -5

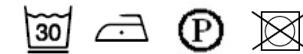
**Color Fastness to Rubbing / Sürtme Renk Haslıđı**

Grade 4-5

**Finish / Bitim İşlemi**

Water Repellent, Acrylic Backing

**Cleaning Instruction / Yıkama Talimatı**



**Use / Kullanım Alanı**

