

---

## Izula 2

---

SD Acrylic and SD Pes Outdoor Fabrics



**Taka fabrics**

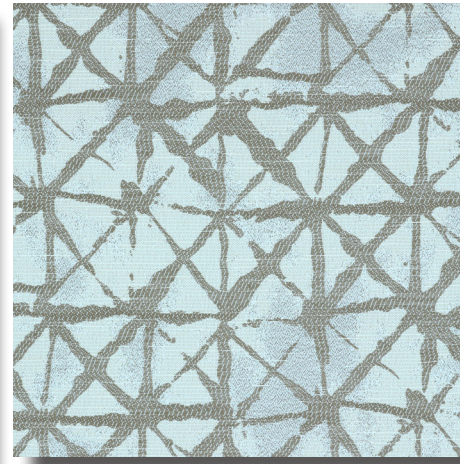




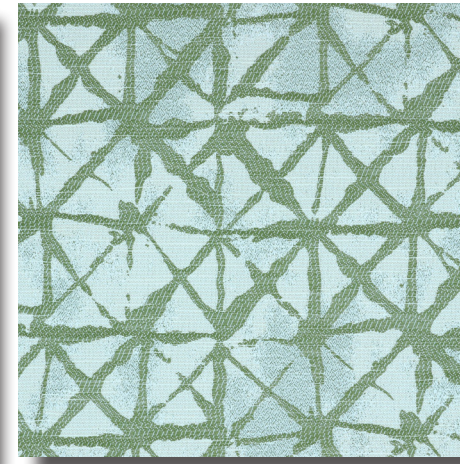
IZULA 170



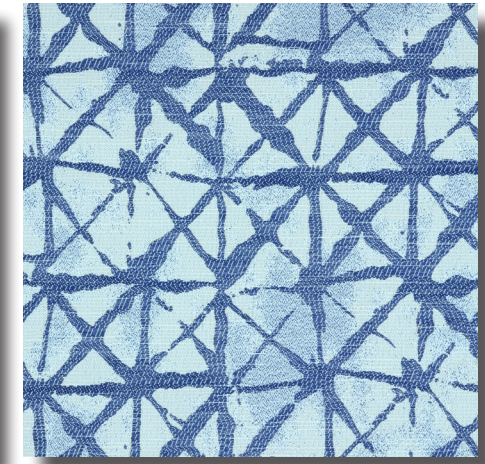
IZULA 138



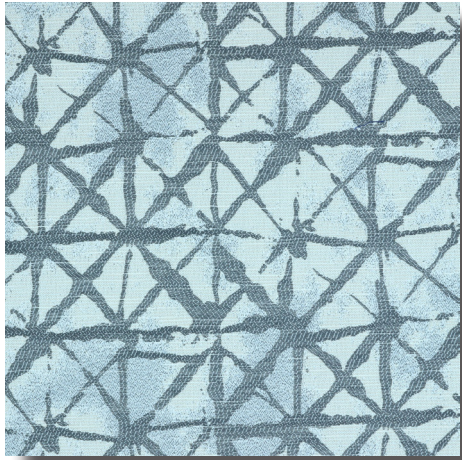
IZULA 171



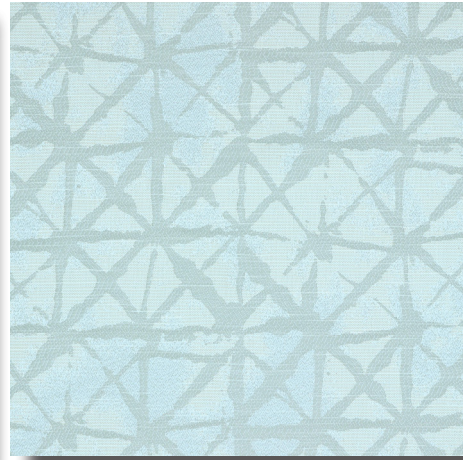
IZULA 160



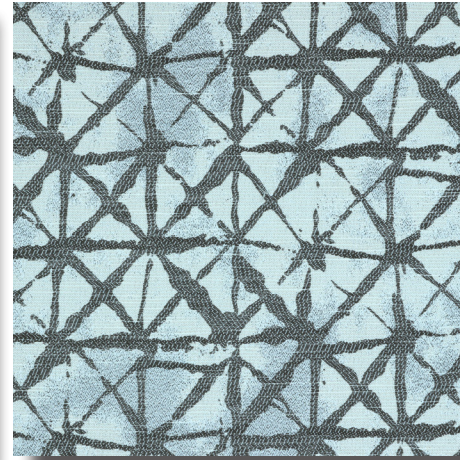
IZULA 146



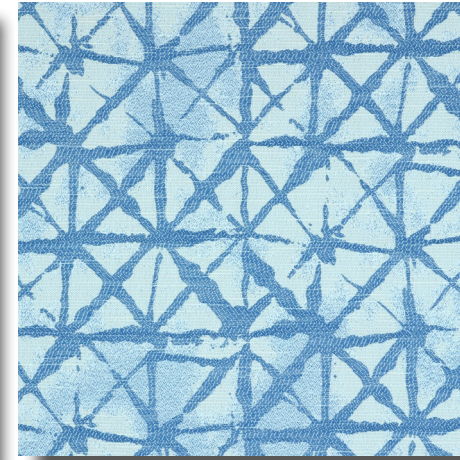
IZULA 143



IZULA 161



IZULA 144



IZULA 124



IZULA 177

**Composition / Kompozisyon**

%42 SD ACR, %42 SD PES, %16 COT

**Width / Kumas Eni**

142 cm

**Weight / Kumas Gramajı**

485 gr/lm

**Design Rapport / Desen Raporu**

Horizontal: 35 cm, Vertical: 27 cm

**Abrasion Resistance (Martindale)**

> rubs

**Resistance to Pilling / Boncuklanma**

Grade 4

**Color Fastness to Rubbing / Sürtme Renk Haslıđı**

Grade 4

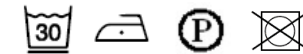
**Color Fastness to Light / Isık Renk Haslıđı**

Grade 7 / 8

**Finish / Bitim Islemi**

Water Repellent

**Cleaning Instruction / Yıkama Talimatı**



**Use / Kullanım Alanı**

