

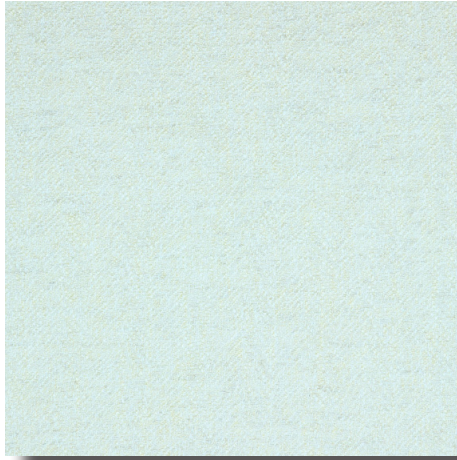
---

Pisa

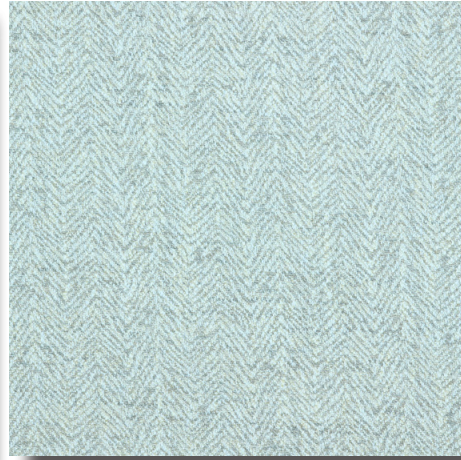
---



**Taka fabrics**



PISA 1026



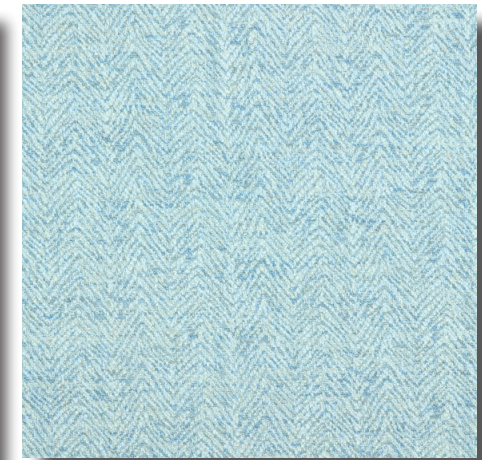
PISA 1021



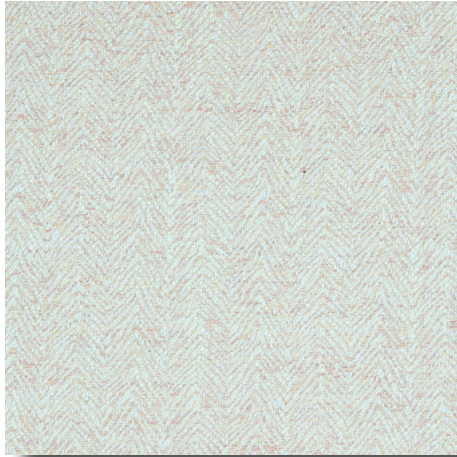
PISA 1023



PISA 1020



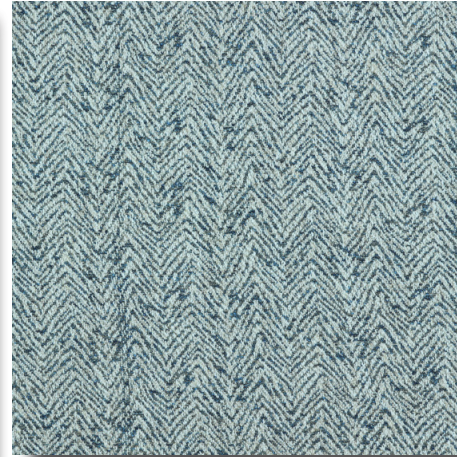
PISA 1024



PISA 1025



PISA 1022



PISA K1020



PISA K1021

**Composition / Kompozisyon**

%15 COT, %15 LIN, %60 ACR, %10 PES

**Width / Kumas Eni**

140 cm

**Weight / Kumas Gramajı**

700 gr/lm

**Design Rapport / Desen Raporu**

Horizontal: 4 cm, Vertical: 2,5 cm

**Abrasion Resistance (Martindale)**

>25000 rubs

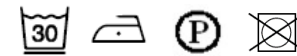
**Resistance to Pilling / Boncuklanma**

Grade 4

**Color Fastness to Rubbing / Sürtme Renk Haslıđı**

Grade 4

**Cleaning Instruction / Yıkama Talimatı**



**Use / Kullanım Alanı**

